

SIMPSON COLLEGE

anthro- pology



By Lauren Gunderson

SP **SIMPSON**
Productions
2025-26 Season

Oct. 3-4 at 7:30 p.m. &
Oct. 5 at 2 p.m.

Blank Performing Arts Center
Barnum Studio Theatre



WELCOME to *anthropology*, our first production of the 2025-26 Season!

Merril has gone through what no sister should ever go through- the disappearance of her sister, Angie. In an effort to help manage her grief, Merrill assembles all the digital material that Angie has left behind and creates a 'virtual Angie'. Virtual Angie is helpful until it begins to unravel the real Angie's disappearance. *anthropology* raises compelling questions about the ethics of artificial intelligence, the nature of memory, and the lengths to which individuals will go to preserve or recreate lost loved ones.

anthropology prompts reflection on the role of technology in our lives, especially in moments of loss, and challenges the audience to consider the boundaries between digital simulations and authentic human experiences.

Please be advised that this production includes adult language and is not recommended for children under 14.

anthropology received its world premiere at Hampstead Theatre, London, on September 7, 2023. Greg Ripley-Duggan, Producer and Chief Executive
anthropology is presented by special arrangement with Broadway Licensing, LLC, servicing the Dramatists Play Service collection. (www.dramatists.com)

Additional Information

Lauren Gunderson, at the end of her script, has recommended the following links for further information on the use of AI in tackling grief.

“The Jessica Simulation: Love and Loss in the Age of A.I.” by Jason Fagone, *San Francisco Chronicle*, <http://www.sfchronicle.com/projects/2021/jessica-simulation-artificial-intelligence/>

“AI’s New Frontier: Connecting Grieving Loved Ones with the Deceased” by Caren Chesler, *The Washington Post*, <http://www.washingtonpost.com/health/2022/11/12/artificial-intelligence-grief>

“Can A.I. Treat Mental Illness?” by Dhruv Khullar, *The New Yorker*, www.newyorker.com/magazine/2023/03/06/can-ai-treat-mental-illness/

“Why Do A.I Chatbots Tell Lies and Act Weird? Look in the Mirror.” by Cade Metz, *The New York Times*, <https://nytimes.com/2023/02/26/technology/ai-chatbot-information-truth.html?smid=nytcare-ios>

“A to Z of Artificial Intelligence” by Billy Perrigo, *Time*, <https://time.com/6271657/a-z-of-artificial-intelligence/>

Director
Ann Woldt

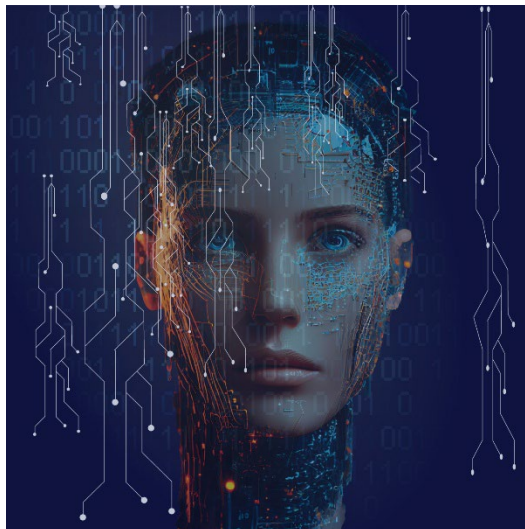
Scenic Designer
Natalie Hining-Bruce

Lighting & Sound Designer
Rick Goetz

Video/Projection Designer
Will Coeur

Costume & Make-Up Designer
Caroline Frias

Stage Manager
Bekah Geerdes



Cast

Merril.....Cade Clark

Angie.....Juliet Low

Raquel.....Anastasia Peron

Brin.....Piper Jackman

Time: Now

Setting: Northern California, Merrill's apartment

There will be no intermission

Please make sure cell phones and alarms are turned off.

Please no text messaging during the performance.

Restrooms are located on the main and upper lobby levels

Production Staff

Technical Director.....Natalie Hining-Bruce
Sound Director.....Rick Goetz
Asst. Stage Managers.....Cory Cox, Chessa Stauser
Deck/Prop Crew Head.....Vanna Freese
Deck/Prop Crew.....Alicia Foster, Naomi Graves, Kaeding Philips
Wardrobe Crew Head.....Robyn Aguilar
Wardrobe Crew.....Jade Anthony, Maddy Gunzenhauser,
Brooklyn Mastin
Lightboard Operator.....Hannah Dank
Sound/Videoboard Operator.....Hannah Larsen
Video Operator 2.....Paisha Goodrich
Deck Electrician.....Lupe Contreras
Box Office Manager.....Jasper McGrath
House Manager.....Elainë Frey
Front of House.....King Barnett, Ben Hodges, Tye Landrum,
Arseydia Rodriguez, Diego Solario, Michael Thacker
Poster Design.....Mady Vasquez

Production Crew

Scene Shop Supervisor: Natalie Hining-Bruce

Lighting and Sound Supervisor: Rick Goetz

Costume Shop Supervisor: Caroline Frias

Costume Construction Crew: Piper Jackman^{UGA}, Robyn Aguilar, Jamilia Artis, King Barnett, Jules Lowe, Sydney Meierotto

Set Construction Crew: Vanna Freese^{UGA}, Jade Anthony, Aaron Scholes, Diego Solorio

Lighting Crew: Nox Bazer, Cory Cox, Hannah Dank, McFarland

Sound : Lupe Contreras^{UGA}

Properties: Maddy Gunzenhauser^{UGA}

Simpson Productions:

Production Assistant: Hannah Larsen^{UGA}

Marketing: Arseydia Rodriguez^{UGA}

Faculty Supervisor of Marketing: Jennifer Nostrala

Audience Services: Amanda Orozco^{UGA}

Faculty Supervisor for Audience Services: Kara Raphaeli

Recruitment/ Outreach: Bekah Geerdes^{UGA}

Faculty Supervisor for Recruitment/Outreach: Ann Woldt

*UGA-Undergraduate Assistant

Simpson Productions Student Leadership

Simpson Productions Scholarship Students

Scholarship recipients hold theatre as an essential part of their lives and are an integral part of the Simpson Productions company.

King Barnett
Cade Clark
Cory Cox
Alicia Foster
Vanna Freese
Bekah Geerdes
Paisha Goodrich

Naomi Graves
Maddy Gunzenhauser
Ben Hodges
Piper Jackman
Tye Landrum
Hannah Larsen
Juliet Low

Brooklyn Mastin
Anastasia Peron
Arseydia Rodriguez
Diego Solario
Chessa Strauser
Michael Thacker

UGA-Undergraduate Assistants

Undergraduate Assistants are positions across campus that are designed to offer students the opportunity to gain practical, in-depth experience complementing their formal education.

2025-2026 UGAs

Sound--Lupe Contreras
Tech Assistant--Vanna Freese
Recruitment & Outreach--Bekah Geerdes

Props--Maddy Gunzenhauser
Production Assistant--Hannah Larsen
Audience Services--Amanda Orozco
Marketing --Arseydia Rodriguez

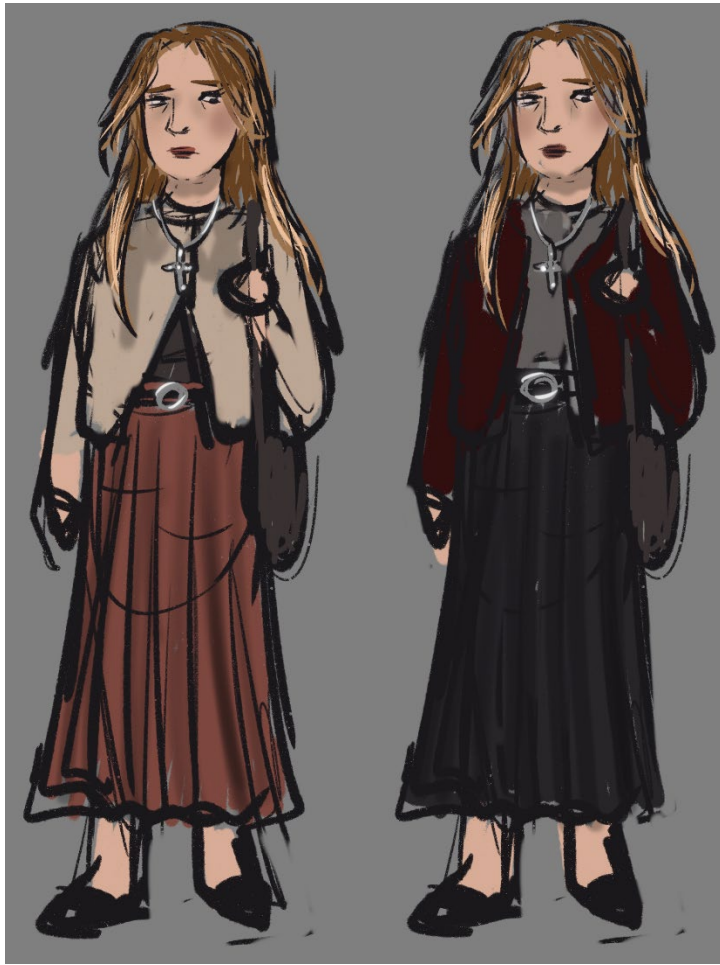
The Guest Artists Program is a key component to the success of Simpson Productions. Guest artists help bring a new perspective to the work and create opportunities for students to engage with a broader network of designers, actors and directors. This production of *anthropology* has provided us the opportunity to bring guest video and projection designer Will Coeur to Simpson College.



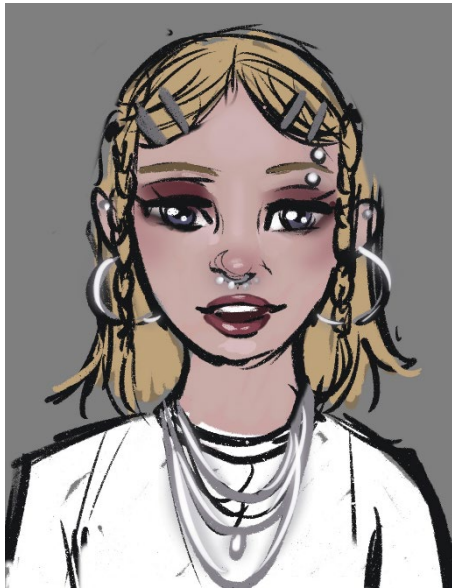
A theatrical designer specializing in Lighting, Projection, and Sound Design, Will Coeur graduated with a Bachelor of Arts Degree in Theater from Southern Illinois University and received his Master of Fine Arts Degree in Lighting Design from Western Illinois University. He has worked in theatres of all shapes and sizes around the country and is constantly trying to stay on the cutting edge of theatre, including serving as the primary alpha tester for new theatre-focused software. Outside of design Will focuses his efforts on automating systems and processes for how we approach theatre to improve efficiency primarily through creating integrated media control systems that can fire all cues from a single control station. Favorite designs include *Orfeo ed Euridice* (College of Charleston), *The Crucible* (Iowa State University), *Into the Woods* (McLeod Summer Playhouse), and *Aladdin* (Fulton Theatre). Will would like to thank his family and friends for their love and support, especially his partner in all things, Sarah. www.coeurdesigns.com

Simpson Productions would like to thank

Aaron Santos
Katrina Colahan



+

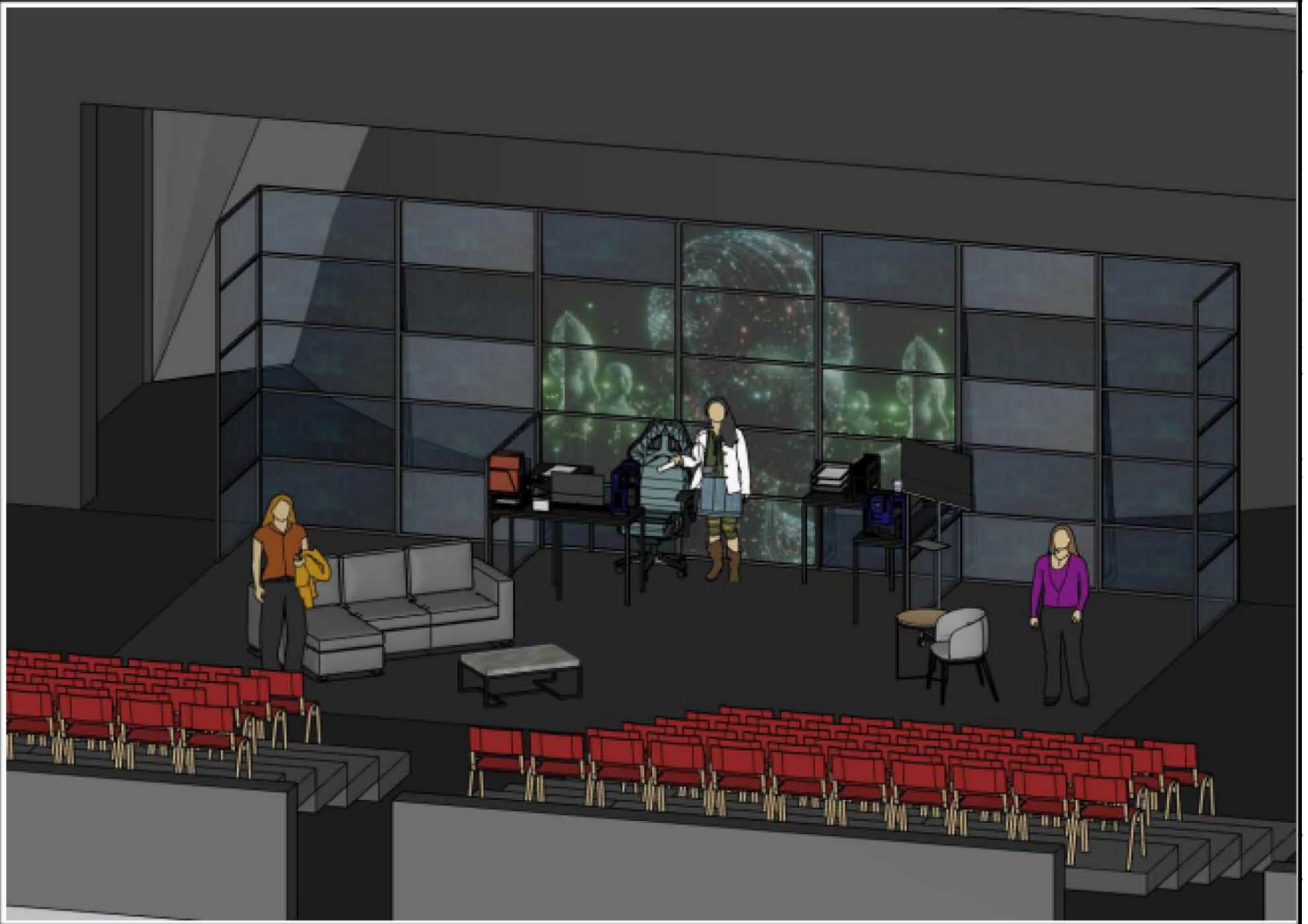


Costume Renderings by Caroline Frias





Costume renderings by Caroline Frias



Scenic rendering by Natalie Hining-Bruce

Simpson Productions 2025-2026 Season



ANTHROPOLOGY

By Lauren Gunderson

Director, Ann Woldt

Oct. 3-4 at 7:30 pm and Oct. 5 at 2:00 pm

Barnum Studio Theatre

preserve or recreate lost loved ones.

Merril has gone through what no sister should ever go through- the disappearance of her sister, Angie. In an effort to help manage her grief, Merrill assembles all the digital material that Angie has left behind and creates a ‘virtual Angie’. Virtual Angie is helpful until it begins to unravel the real Angie’s disappearance. *anthropology* raises compelling questions about the ethics of artificial intelligence, the nature of memory, and the lengths to which individuals will go to



LITTLE SHOP OF HORRORS

Book and Lyrics by Howard Ashman

Music by Alan Menken

Director, Jennifer Nostrala

Musical Director, Damon Stevens

Nov. 14-15 at 7:30 pm and Nov. 16 at 2:00 pm

*In conjunction with the 28th annual High School Theatre Festival
Pote Theatre*

The delightfully dark and wildly entertaining musical *Little Shop of Horrors* blends doo-wop, Motown, and rock-and-roll to tell the quirky tale of Seymour, a meek floral assistant who discovers a strange plant with a secret thirst for human blood. As the plant grows, so does Seymour’s fame—but at a horrifying cost. With catchy songs, eccentric characters, and a touch of horror-comedy, *Little Shop of Horrors* has become a beloved staple of American musical theatre.



THE OLD MAID & THE THIEF

By Gian Carlo Menotti

Conductor, Damon Stevens

Director, Ann Woldt

Barnum Studio Theatre

Feb. 20-21 at 7:30 pm and Feb. 22 at 2 pm, 2025

Originally commissioned for radio in 1939, *The Old Maid and the Thief* is a witty and satirical tale of gossip, deception, and the facades we maintain in the name of propriety. Set in a quiet American town, the opera follows the lives of Miss Todd and her housemaid Letitia as they take in a charming wanderer only to find themselves entangled in increasingly outrageous moral compromises.

This production brings Menotti's lively score and sharp humor to life in a clever recreation of that first radio play that's as thought-provoking as it is entertaining.



THE CHILDREN'S HOUR

By Lillian Hellman

Director, Kara Raphaeli

April 17-18 at 7:30 pm and April 19 at 2:00 pm

Pote Theatre

Rumor. Scandal. Destruction. Set in a school for girls run by two unmarried women, this 1934 play examines the destructive force of a homophobic moral panic. Once a malicious youngster starts a rumor about the two women, the community shuns them, leading to tragedy.

**Reserve tickets through [Humanitix](https://www.humanitix.com)
or by contacting the Simpson Productions Box Office:**

515-961-1601

bpacboxoffice@simpson.edu



Caroline Frias	Costume Designer; Costume Shop Supervisor; Courses in Design and Tech
Rick Goetz	Lighting and Sound Designer; Lighting and Sound Supervisor Courses in Design and Tech
Natalie Hining-Bruce	Scene Designer; Technical Director; Scene Shop Supervisor; Courses in Design and Tech
Jennifer Ross Nostrala	Simpson Productions Producer; Courses in Directing, Acting, Literature, Script Analysis; Director
Kara Raphaeli	Assistant Professor; Courses in Directing, Plays and Performances, Script Analysis, World Theatre; Director
Damon Stevens	G. Dewey and M. Maine Larsen Chair in Opera; Courses in Music History, Ensembles, Collaborative Piano, Opera; Conductor
Ann Woldt	Theatre Department Chair; Recruitment & Outreach Coordinator; Courses in Acting, Voice, Script Analysis, Interpretation; Director