

STUDENT SUPPORT SERVICES

SIMPSON COLLEGE

Director

Graeme Armstrong
Phone: 515.961.1231

E-mail: armstron@simpson.edu

Assistant Director-Counselor

April Goers

Phone: 515.961.1232

E-mail: april.goers@simpson.edu

Learning Specialist

Jon Knapp McAlister

Phone: 515-961-1227

Email: jon.mcalister@simpson.edu

Administrative Assistant

Denise Kalbus

Phone: 515-961-1230

Email: denise.kalbus@simpson.edu

INTRODUCING... Student Support Services at Simpson College

Our organization is both **Fun** and **Helpful!**

Student Support Services is one of three TRiO educational opportunity outreach programs created through the Higher Education Act of 1965. The programs are designed to assist students to begin and complete secondary education and move on to participate more fully in America's economic and social life.

We in Student Support Services at Simpson are committed to supporting students throughout their college career. Our goal is to do our best to ensure our students not only graduate from Simpson...but that they graduate feeling confident and prepared for what lies ahead.

In addition to providing them with academic support, we also want to be

a hub for them to meet new friends and experience cultural activities. We have a wide array of services designed to support the many needs students encounter while in college including, but not limited to:

- Workshops on time management, writing skills, test-taking, etc.
- Cultural activities: Pizza parties, Science Center visits, Urban Adventures, going as a group to campus events, etc.
- Peer Mentoring
- Career and Vocational planning
- Academic, Financial, and Personal counseling



Few things say "welcome" like a pumpkin bar and a cup of hot chocolate, the featured fare at the SSS Open House in October.

We also love to share in the excitement of college life. If a student gets their first "A" on a paper, we want to be the first place they go to for a celebration. Overall, our main goal is to do all we can to ensure our students get their degree and have a fun time doing it!

*"In order to succeed
your desire for
success should be
greater than your
fear of failure"*

~ Bill Cosby

Student Support
TRiO
Services

How has SSS helped real Simpson Students?

Before joining our program, many students wonder what SSS is all about. If that's something that's crossed your mind, take a look below to see some real examples of the services we've been providing.

Tutoring:

Many SSS students have come into our offices looking for help with their classes. One student needed a paper edited and polished for his history class. Another student came to a series of meetings for help with a research and writing project in her marketing class. Two students needed some strategies for reading from an original source. Others have come in looking to get up to speed in math and computer software. This spring, we are adding "Supplemental Instruction" to our list of services. This program will provide guided study sessions for several Simpson classes.

General Academic Skills:

Sometimes, SSS students need help with general skills that make all of their classes easier. We taught a

freshman how to use all of her syllabi to plan an entire month's worth of homework. Another student came in to find ways to read and remember information out of her textbooks. Several students have begun working with LASSI (available through Jon, the SSS Learning Specialist). LASSI is an on-line program that helps students with study skills, time management, test-taking, reading, anxiety, and more.

Paying for College:

SSS has provided several students with supplemental grant aid. This has helped them buy books or lower their debt this year. More SSS aid will be awarded in the spring. Also, with SSS advice, several students have begun searching for scholarships. Our strategy is to make sure that we help students carefully polish every scholarship application before it is sent.

Customized Assistance

We will gladly help our students in any way we can. We have been working to help a student find computer software that will help her with a dis-

ability. Our staff arranged for a meeting between an instructor and an SSS student to discuss career possibilities as she considered a second major. We also hired a student to work as a peer mentor, providing her with both income and career development opportunities.

Fun

This fall, we had a good time with our students, too. We enjoyed cakes and cocoa during our Open House in October. In December, we ate pizza and played games in Kresge Lounge. SSS students had a good time, and picked up their program T-shirts, too! This spring, we're looking forward to more fun, especially our overnight trip to Kansas City at the end of April.

You

Want to know what we can do for you? You could call us (ext. 1230), or write (student.support@simpson.edu), or visit our website (www.simpson.edu/support). However, the best way to find out is to stop by and talk to us. ***Our doors are always open!***



Jon welcomes students as they arrive for the pizza party hosted by Student Support Services in Kresge lounge.

Our greatest glory is not in never failing, but in rising up every time we fail.

~ Ralph Waldo Emerson



Students meet new friends and learn more about how Student Support Services can help them succeed at Simpson.

Student Support
TRIO
Services

FAQ-STUDENT SUPPORT SERVICES



A few questions (with answers!) you might have in regard to this new program on the Simpson campus...

How do I find out if I am eligible for this program?

Each year the program director will run orientation sessions and these will be advertised through the web-site, so you can see when they are running. On top of that you could check out the site at

www.simpson.edu/support You could even call our office at **961-1230** and we can get you an answer very quickly.

I heard there is extra financial aid money available; is that true?

Actually that is partially true. For students who are accepted into the SSS program they can apply for supplemental grant aid each semester. For most students who receive it, the amount is around \$500 and can be enough to cover the cost of textbooks.

Is there a deadline for me to enroll into the SSS program?

No, you can apply to the SSS program at any time. There is a program limit of 160 students. So when we get up to that number of participants we may need to have a cap on admission. Until then it is open enrollment

Will I feel welcome in the Student Support Services program?

*We want you to feel part of the college and use the comfort of our program office whenever you need it. Each semester we have fun events that get all the students together; it's a great chance to meet and make new friends as well as hang out with the program staff. Our friendly and approachable program staff are available throughout the day. Feel free to call **Graeme Armstrong** (961-1231), **April Goers** (961-1232) or **Jon Knapp McAlister** (961-1227) with any questions or for an appointment.*

Is tutoring available to me if I need it with a class?

Tutoring is available to you at no cost, FREE! That can be set up through our Hawley Academic Resource Center. In addition, we will help facilitate Supplemental Instruc-

tion where students in classes help each other to be successful. It's a fun learning environment among students you already know.

Will I be recognized for my achievements?

Each year we will have an SSS program awards function. That might be in the form of a dinner, ice-cream social or party depending on what the students select. We will also let the campus community know how you are doing through channels like this newsletter.

I am so worried about attending college, I don't know where to start!

*That's where our professional on-site staff can really help. April and Jon are happy to work with any SSS student to evaluate their skills and abilities. Using a learning assessment and skills inventory allows them to better advise strategies for success, whether they be test taking, note taking, writing or for life. All you have to do is call the **SSS office at 961-1230** and we can set up an appointment time for you to do that.*

Can you help me with class registration?

This is traditionally an area where your assigned faculty advisor would work with you. Our program staff are available to answer questions and give advice on course loads, study habits and personal time management while attending college. We also have student peer mentors who can help guide you on the journey through college.

How does your program help students transition to life on a college campus?

We really do understand that for many students the transition into college and residence life is unnerving. That's one reason we will organize social events to help you meet new friends. We also arrange trips to bigger urban centers at the end of each spring semester. This coming semester we are taking many of the program students to Kansas City during the month of April for a weekend cultural trip.

What does SSS do for fun, and what's the catch?

There is no catch. If you have the opportunity to join in with a social party, cultural trip or outing you should expect that the SSS staff will take care of all major out of pocket expenses. We want you to have a rewarding experience while in the program and we understand that extra expenses on top of your tuition may just be too much.

I still don't know what I want to do when I grow up

That's okay, between our Career Counseling office, Student Support Services and the Lilly Initiative for vocational discernment we can help you discover what it is you would like to do when no longer a student. Use us as much as you would like to feel comfortable.

How do I know if I'm the first in my family to go to college?

Our grant looks to identify students whose parents did not graduate from an accredited 4 year institution. Even if your mother and father did have a year or two at college, that's okay. Provided they did not graduate from a 4 year college, then you are eligible.

What about a disability, I don't have one?

That's fine. You can be admitted into the program on a variety of differing criteria. If you either have a physical or mental disability, we will need to see that it has been documented by a medical professional.

All this sounds great but...why would I be in SSS if I can get many of these services elsewhere?

That is a great question. Try to remember that SSS is not just here to give academic support in the form of services and counseling. We are also here to help build a community and know that once you identify with us you will enjoy the experience.



STUDENT SUPPORT SERVICES SPRING 2006 EVENTS

Workshops

Getting Essay Writing Right

Thursday, January 19

3:30 pm – 4:30 pm

Introducing and Concluding your Essay

Tuesday, March 21

3:30 pm – 4:30 pm

Test Success

Thursday, February 9

6:30 pm – 7:30 pm

Financial Aid Workshop

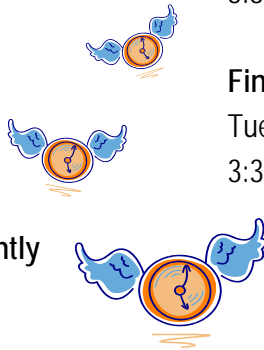
Tuesday, April 11

3:30 pm – 4:30 pm

Using Your Time Efficiently

Tuesday, February 20

6:30 pm – 7:30 pm



All workshops:

Hawley Resource Center (Dunn Library, 3rd Floor) Contact SSS in Brenton Student Center, Rm. 112 or call extension 1230 with questions

Cultural Events

“Celebrating TRiO” Day -
IMAX/Science Center Outing

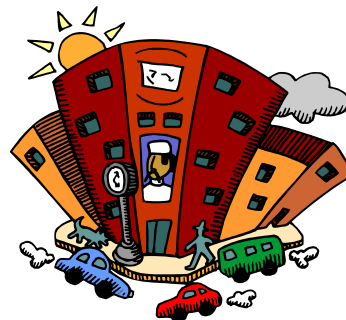
Thursday, February 16

Urban Adventure
to Kansas City

Saturday, April 29 — Sunday, April 30

SSS Get-Together - Come with
uSSS to see singer/songwriter
Jason LeVasseur on Campus

Thursday, March 24



All Cultural Events:

**Sign up information will be made available
before scheduled events -**

Brenton Student Center, Rm. 112 or by calling Ext. 1230

student.support@simpson.edu or

<http://www.simpson.edu/support/>



*“If I treat you as
though you are what
you are capable of
becoming, I help you
become that.”*

*~ Johann Wolfgang
von Goethe*



Jon chats with students about
how their Fall 2005 semester
has gone so far.



Address Label Here

www.simpson.edu/support/
Indiana, IA 50125
701 N.C. Street



MEET THE STAFF



Sometimes the best way to support students is to provide them with food and fun. We had plenty of both at the SSS pizza party in December.



Graeme Armstrong
Director

Graeme Armstrong moved to the United States in 1993 and is a first generation college student. He graduated from Simpson with a Bachelor in management, having taken classes as a non-traditional student. He went on to complete a masters degree in Organizational Development and is working on a Ph.D. in Higher Education at Iowa State University. Graeme joins the program with six years of experience at teaching, counseling, and advising non-traditional students at Simpson.



Jon Knapp McAlister
Learning Specialist

Jon Knapp McAlister started working frame construction after high-school, but found he was really drawn to education. He worked his way through school, completing a B.A. in history in 1997, and an M.A. in Education in 1999. He then taught writing, math, and social studies in Kirkwood Community College's Adult High School program for six years before joining SSS at Simpson College.



April Goers
Assistant Director

April is a first generation college student, who went to Iowa Sate University as an undergraduate and went on to complete studies in a masters program in Higher Education. April has worked with other TRIO programs; as an academic advisor in Upward Bound and also as a Student Services Advisor at Hamilton Technical College. During her time at ISU April also served students in the Academic Success Center, and is well experienced with helping students be successful.



Denise Kalbus
Administrative Assistant

Denise Kalbus is the administrative Assistant for Student Support Services new TRIO program at Simpson. Denise is a first generation college student, graduating from DMACC in 1992 with an Associate of Applied Arts degree in Graphic Design. She is a non-traditional student taking classes at Simpson College with the Division of Adult Education. Denise is striving for a degree in Corporate Communications and is projected to finish December of 2006.

